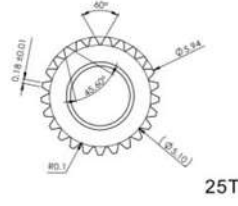
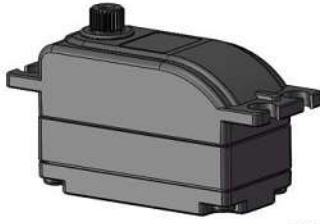
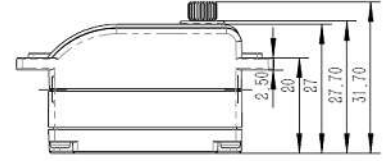
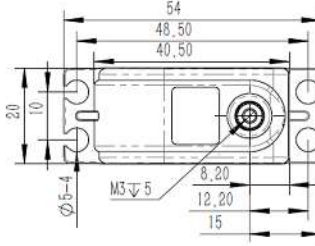


CM653 Technical Specification



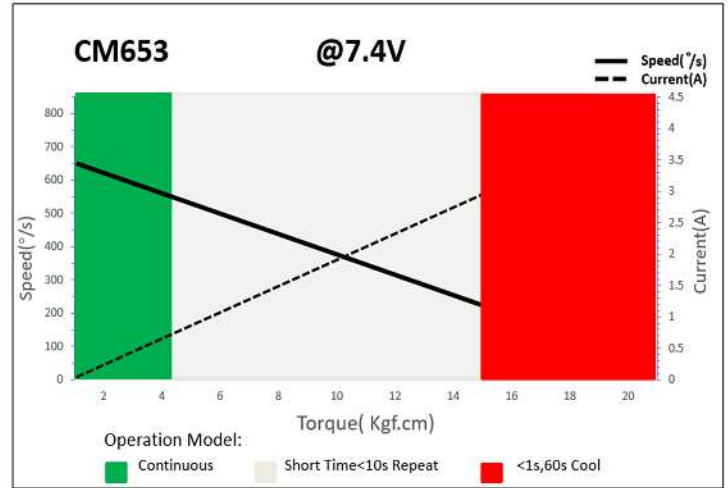
25T- 6mm Output Shaft Spline



1. Operating Data

Rated Voltage	DC7.4V
Voltage Range	DC4.8V-8.4V
Stalling Torque	10Kgf.cm@4.8V
	12Kgf.cm@6.0V
	15Kgf.cm@7.4V
	18Kgf.cm@8.4V
Speed	0.12sec/60°@4.8V
	0.10sec/60°@6.0V
	0.09sec/60°@7.4V
	0.08sec/60°@8.4V
Start Current	2.60A@4.8V
	3.20A@6.0V
	3.60A@7.4V
	4.05A@8.4V
Working Frequency	1520us/333Hz
Default Travel Angle	±50° =100° Total
Temperature Range	-10°C.....+65°C
Soft Start	Programable
Programable	Yes
Motor Type	Coreless DC Motor
Gear Set Material	Metal Gear
Position Sensor	Potentiometer
Ball Bearing	2BB
Waterproof	IP65
Case Dimensions	40.5*20*27.5±0.2mm
Weight	43g±10%

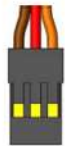
2. Performance



3. Command signal PWM Command Interface

Signal Voltage	HIGH: min.3.3V, max.5.0V Low: min.0.0V, max.1.5V
Pulse Lengths	900us-2100us
Pulse Lengths for Position	1000us/1500us/2000us -50°/0°/+50°

4. Electrical Connection

 3 2 1	Pin Assignment			
	1	Orange	Signal	PWM Command
	2	Red	DC+	Supply Voltage
	3	Brown	DC-	Supply Ground